



## PC256T-20-4

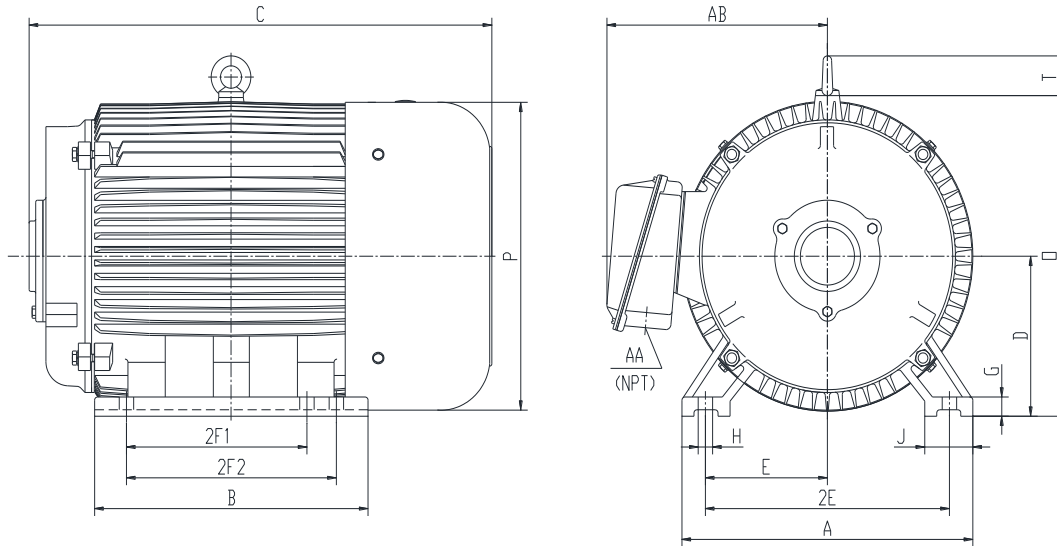
### CONVERTER

DESIGNED FOR USE WITH ROTARY PHASE CONVERTER UNITS

TOTALLY ENCLOSED FAN COOLED

SPIKE RESISTANT WIRE (2200V PEAK VOLTAGE SPIKE RATING)

Factory Certified for T2B Class I, Division II, Groups A,B,C & D and Class II, Division II, Groups F & G



### DIMENSIONS

HP	RPM	Frame	MOUNTING													
			A	B	C	D	G	H	J	E	2E	2F1	2F2	O	P	T
20	1800	256T	13	12.2	20.8	6.25	0.7	0.53	2.75	5	10	8.25	10	13	12.4	2.2

Conduit Box		Bearings		Mount
AA	AB	DE	ODE	
1.25	10.1	6309	6309	F1

**BEARING LUBRICATION:** The bearings come lubricated with Mobil Polyrex EM Polyurea Grease. It is recommended that you add some additional lubrication when the motor is installed.

Three options (brands) for suitable lubrication include, but are not limited to, the following:

- 1.) Mobil Polyrex EM
- 2.) Citco Polyurea MP
- 3.) Conoco Phillips Polytac EP





## PC256T-20-4

### CONVERTER

DESIGNED FOR USE WITH ROTARY PHASE CONVERTER UNITS

TOTALLY ENCLOSED FAN COOLED

SPIKE RESISTANT WIRE (2200V PEAK VOLTAGE SPIKE RATING)


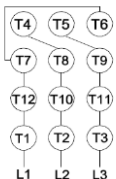



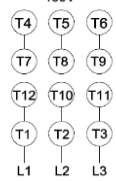
Factory Certified for T2B Class I, Division II, Groups A,B,C & D and Class II, Division II, Groups F & G

### PERFORMANCE DATA

HP	RPM	Frame	Voltage	Frequency (Hz)	Full Load S.F.	Insulation Class	NEMA Design	Slip (%)	NEMA Code	Enclosure Type	IP Rating	Max. Ambient
20	1750	256T	208-230/460	60	1.15	F	B	2.8	G	TEFC	55	40 °C

Amps (460V)		Efficiency (%)		Power Factor	Torque (ft-lb)			DE Bearing	ODE Bearing	Connection	Weight (lbs.)
FLA	LRA	NOM.	MIN.	100%	FLT	LRT %	BDT %				
24.2	145	89.5	87.5	0.86	59.8	200	230	6309	6309	12 Lead 2Δ/Δ	283

### NAME PLATE

 <b>ROTARY PHASE CONVERTER</b> INVERTER DUTY 20:1 VT; 10:1 CT      Hernando, MS 38632										<b>CONNECTION DIAGRAMS</b> 208-230V 								
CAT NO.		PC256T-20-4				FRAME		256T	WT/LBS		283							
HZ		60	S.F.		1.15	HZ		50	S.F.		1.0	ENCL		TEFC	IP		55	
HP		20	RPM		1800	HP		20	RPM		1500	DUTY		CONT	DES		B	
VOLTS			208-230/460			VOLTS			190/380			AMB		40 °C		INS		F
AMPS			51.8-48.4/24.2			AMPS			58/29			BRG DE/ODE		6309/6309				
CODE		G	P.F.		0.86	CODE		F	P.F.		0.88	LUB: Mobil Polyrex EM						
EFF		89.5	MIN		87.5	EFF		87.0	MIN		84.0	SER NO						
		AC INDUCTION CONVERTER										460V 						

### APPLICATIONS:

Specifically designed for use as the converter component for rotary phase converters.